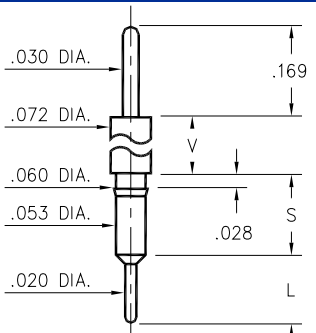


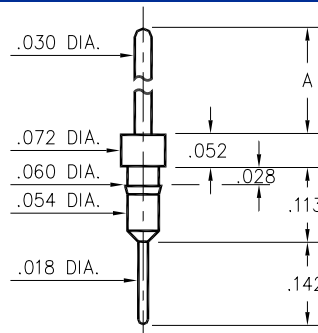
3400 ⇒ 3402/3405/3410



| Basic Part Number | Shoulder Height V | Length S | Length L |
|-------------------|-------------------|----------|----------|
| 3402-0 | .052 | .138 | .115 |
| 3401-0 | .100 | .136 | .115 |
| 3405-0 | .169 | .146 | .115 |
| 3400-0 | .481 | .145 | .115 |
| 3410-0 | .934 | .136 | .124 |

34XX-X-00-XX-00-00-03-0
Press-fit in .057 mounting hole

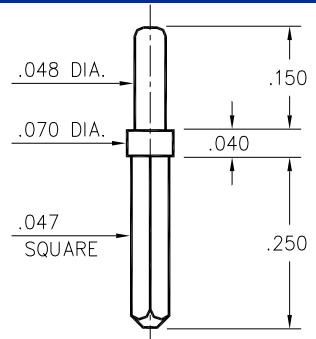
3411



| Basic Part Number | Pin Length A |
|-------------------|--------------|
| 3411-0 | .417 |
| 3411-1 | .217 |

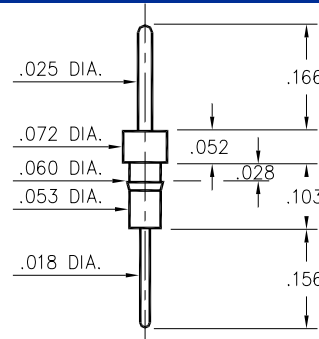
3411-X-00-XX-00-00-03-0
Press-fit in .057 mounting hole

0600



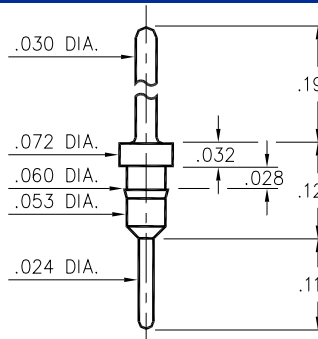
0600-0-05-XX-00-00-01-0
Solder mount in .052 mounting hole

0290



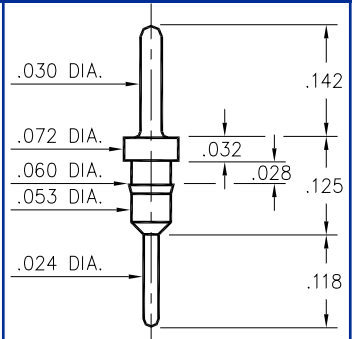
0290-0-00-XX-00-00-03-0
Press-fit in .057 mounting hole

7007



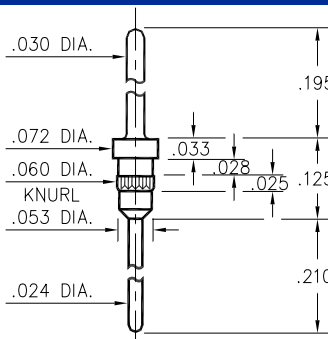
7007-0-00-XX-00-00-03-0
Press-fit in .057 mounting hole

5016



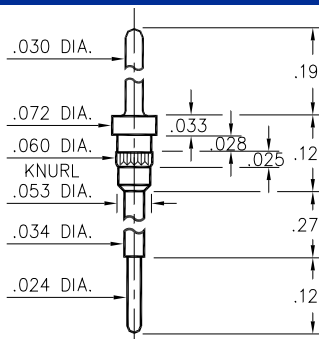
5016-0-00-XX-00-00-03-0
Press-fit in .057 mounting hole

5005



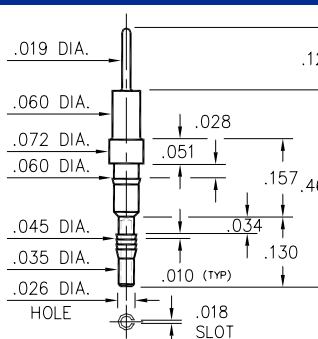
5005-0-00-XX-00-00-03-0
Press-fit in .057 mounting hole

5107



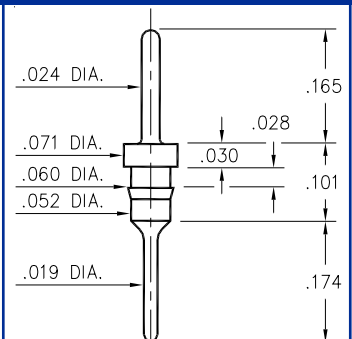
5107-0-00-XX-00-00-03-0
Press-fit in .057 mounting hole

5604



5604-0-01-XX-00-00-03-0
Compliant press-fit in .040±.003 plated hole. For .060→.100 thick board.

8919



8919-0-00-XX-00-00-03-0
Press-fit in .057 mounting hole

SPECIFICATIONS

PIN MATERIAL:
Brass Alloy 360, 1/2 Hard
(Except where noted)

DIMENSION IN INCHES
TOLERANCES ON:
LENGTHS: ±.005
DIAMETERS: ±.002
ANGLES: ± 2°

ORDER CODE: XXXX - X - 0X - XX - 00 - 00 - 0X - 0

BASIC PART # →

SPECIFY PIN FINISH:
01 200µ" TIN/LEAD OVER NICKEL
15 10µ" GOLD OVER NICKEL
21 20µ" GOLD OVER NICKEL
34 50µ" GOLD OVER NICKEL